



CWS 250A

Elbow separable connector

for all 1-core polymeric cables, for outer cone system terminals type A

Cellplux elbow separable connectors CWS are suitable for connecting all polymeric-insulated 1-core cables (PVC, PE, XLPE, EPR), with different types of semi-conductive layers (graphite-coated or strippable) and screen design (wire or tape screen), to switching equipment and transformers having an outer cone system type A, up to maximum network voltage of 24 kV in accordance with EN 50180 and EN 50181.

Characteristics

- With capacitive measuring point
- Individually tested
- Outer semi-conductive layer made of semi-conductive EPDM provides protection from exposed electrical parts
- Cable sheath insulation fault test may be performed while under voltage
- For copper and aluminium conductors
- Quick, safe and easy assembly
- Suitable for a wide range of applications due to integrated screw cable lug

Application/Suitability

- Indoor

Voltage level

- U_0/U_m 6/10 (12) kV - 12.7/22 (24) kV

Test standards

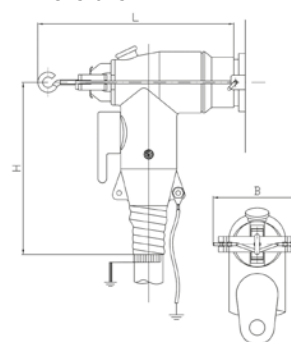
- CENELEC HD 629.1 (DIN VDE 0278, part 629-1)

Storage conditions/Shelf life

- Unlimited shelf life



Dimensions



Scope of delivery

Set of 3 separable connectors, silicone stress control elements, earthing set, screw cable lug for main conductor, assembly material, assembly instructions

Optional accessory: EGA earthing kit for cables with tape screen (see Connecting technology)

Note: Elbow separable connections for alternative cross-sections and for class 5 conductors on request

Type	L mm	B mm	H mm	min. Ø over core insulation after removal of the outer conductive layer mm	12 kV	17.5 kV	24 kV	Art.-No.	
					Nominal cross section mm ²				
U_0/U_m 6/10 (12) kV - 12.7/22 (24) kV									
CWS 250A 24kV	16-95 M EGA	200	80	178	14.7	50 - 95	25 - 95	16 - 95	295167
	70-150 M EGA	200	80	178	19.9	120 - 150	95 - 150	70 - 150	293792



CGS 250A Straight separable connector

for all 1-core polymeric cables, for outer cone system terminals type A

Cellplex straight separable connectors CGS are suitable for connecting all polymeric-insulated 1-core cables (PVC, PE, XLPE, EPR), with different types of semi-conductive layers (graphite-coated or strippable) and screen design (wire or tape screen) for switching equipment and transformers having an outer cone system type A, up to maximum network voltage of 24 kV in accordance with EN 50180 and EN 50181.

Characteristics

- With capacitive measuring point
- Individually tested
- Outer semi-conductive layer made of semi-conductive EPDM provides protection from exposed electrical parts
- Cable sheath insulation fault test may be performed while under voltage
- For copper and aluminium conductors
- Quick, safe and easy assembly
- Suitable for a wide range of applications due to integrated screw cable lug

Application/Suitability

- Indoor

Voltage level

- U_0/U_m 6/10 (12) kV - 12.7/22 (24) kV

Test standards

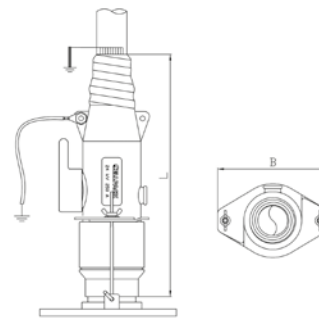
- CENELEC HD 629.1 (DIN VDE 0278, part 629-1)

Storage conditions/Shelf life

- Unlimited shelf life



Dimensions



Scope of delivery

Set of 3 separable connectors, silicone stress control elements, earthing set, screw cable lug for main conductor, assembly material, assembly instructions

Optional accessory: EGA earthing kit for cables with tape screen (see Connecting technology)

Note: Straight separable connections for alternative cross-sections and for class 5 conductors on request

Type	L mm	B mm	min. Ø over core insulation after removal of the outer conductive layer mm	12 kV	17.5 kV	24 kV	Art.-No.	
				Nominal cross section mm ²				
U_0/U_m 6/10 (12) kV - 12.7/22 (24) kV								
CGS 250A 24kV	25-95 M EGA	248	110	14.7	50 - 95	25 - 95	25 - 95	295283
	70-150 M EGA	248	110	19.9	120 - 150	95 - 150	70 - 150	293797



CWS 400A

Elbow separable connector

for all 1-core polymeric cables, for outer cone system terminals type B

Cellpack elbow separable connectors CWS are suitable for connecting all polymeric-insulated 1-core cables (PVC, PE, XLPE, EPR), with different types of semi-conductive layers (graphite-coated or strippable) and screen design (wire or tape screen), to switching equipment and transformers having an outer cone system type B, up to maximum network voltage of 36 kV in accordance with EN 50180 and EN 50181.

Characteristics

- With capacitive measuring point
- Individually tested
- Outer semi-conductive layer made of semi-conductive EPDM provides protection from exposed electrical parts
- Cable sheath insulation fault test may be performed while under voltage
- For copper and aluminium conductors
- Quick, safe and easy assembly
- Suitable for a wide range of applications due to integrated screw cable lug

Application/Suitability

- Indoor
- Voltage level**
- U_0/U_m 6/10 (12) kV - 19/33 (36) kV

Test standards

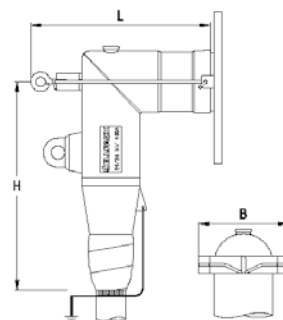
- CENELEC HD 629.1 (DIN VDE 0278, part 629-1)

Storage conditions/Shelf life

- Unlimited shelf life



Dimensions



Scope of delivery

Set of 3 separable connectors, silicone stress control elements, earthing set, screw cable lug for main conductor, assembly material, assembly instructions

Optional accessory: EGA earthing kit for cables with tape screen (see Connecting technology)

Note: Elbow separable connections for alternative cross-sections and for class 5 conductors on request

Type	L mm	B mm	H mm	min. Ø over core insulation after removal of the outer conductive layer mm	12 kV	17.5 kV	24 kV	36 kV	Art.-No.	
					Nominal cross section mm ²					
U_0/U_m 6/10 (12) kV - 12.7/22 (24) kV										
CWS 400A 24kV	25-70 EGA	215	107	250	14.7	50 - 95	25 - 95	25 - 70	250720	
	95-240 EGA	215	107	250	22.0	150 - 240	120 - 240	95 - 240	246176	
U_0/U_m 12/20 (24) kV - 19/33 (36) kV										
CWS 400A 36kV	35-95 EGA	215	107	250	22,0			95 - 95	35 - 95	250726
	95-150 EGA	215	107	250	22,0			95-240	95-150	359558
	150-240 EGA	215	107	250	30,8			240 - 240	150 - 240	247102



CTS 630A T-shaped separable connector

for all 1-core polymeric cables, for outer cone system terminals type C

Cellplux screwable T-shaped separable connectors CTS are suitable for connecting all polymeric-insulated 1-core cables (PVC, PE, XLPE, EPR), with different types of semi-conductive layers (graphite-coated or strippable) and screen design (wire or tape screen) to switching equipment and transformers having an outer cone system type C, up to maximum network voltage of 36 kV in accordance with EN 50180 and EN 50181.

Characteristics

- With capacitive measuring point
- Individually tested
- Outer semi-conductive layer made of semi-conductive EPDM provides protection from exposed electrical parts
- Cable sheath insulation fault test may be performed while under voltage
- For copper and aluminium conductors
- Quick, safe and easy assembly
- Suitable for a wide range of applications due to integrated screw cable lug

Application/Suitability

- Indoor
- Outdoor

Voltage level

- U_0/U_m (6/10 (12) kV - 19/33 (36) kV)

Test standards

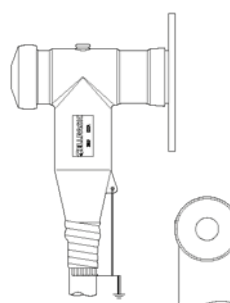
- CENELEC HD 629.1 (DIN VDE 0278, part 629-1)

Storage conditions/Shelf life

- Unlimited shelf life



Dimensions



Scope of delivery

Set of 3 separable connectors, silicone stress control elements, earthing set, screw cable lug for main conductor, assembly material, assembly instructions

Optional accessory: EGA earthing kit for cables with tape screen (see Connecting technology)

Note: Other T-shaped separable connectors (cross-sections, class 5) available on request

Type	L mm	B mm	H mm	min. Ø over core insulation after removal of the outer conductive layer mm	12 kV	17.5 kV	24 kV	36 kV	Art.-No.	
					Nominal cross section mm ²					
U_0/U_m 6/10 (12) kV - 12.7/22 (24) kV										
CTS 630A 24kV	25-70	194	85	250	14.7	50 - 95	25 - 95	25 - 70	355434	
	95-240	194	85	250	22.0	150 - 240	120 - 240	95 - 240	355433	
	240-400	194	85	250	23,7	240 - 400	240 - 400	240 - 400	355561	
U_0/U_m 12/20 (24) kV - 19/33 (36) kV										
CTS 630A 36kV	35-95	194	85	250	22.0			95 - 95	35 - 95	355562
	95-150	194	85	250	22.0			95 - 240	95 - 150	355563
	150-240	194	85	250	30.8			240 - 240	150 - 240	355564
	240-400	194	85	265	31.5			300 - 400	240 - 400	356660



CTS 1250A

T-shaped separable connector

for all 1-core polymeric cables, for outer cone system terminals type C

Cellpack screwable T-shaped separable connectors CTS are suitable for connecting all polymeric-insulated 1-core cables (PVC, PE, XLPE, EPR), with different types of semi-conductive layers (graphite-coated or strippable) and screen design (wire or tape screen) to switching equipment and transformers having an outer cone system type C, up to maximum network voltage of 36 kV in accordance with EN 50180 and EN 50181.

Characteristics

- With capacitive measuring point
- Individually tested
- Outer semi-conductive layer made of semi-conductive EPDM provides protection from exposed electrical parts
- Cable sheath insulation fault test may be performed while under voltage
- For copper and aluminium conductors
- Quick, safe and easy assembly
- Suitable for a wide range of applications due to integrated screw cable lug

Application/Suitability

- Indoor
- Voltage level**
- U_0/U_m 6/10 (12) kV - 19/33 (36) kV

Test standards

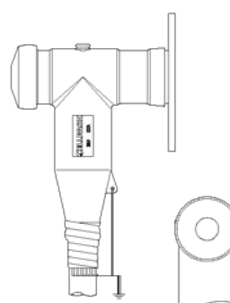
- CENELEC HD 629.1 (DIN VDE 0278, part 629-1)

Storage conditions/Shelf life

- Unlimited shelf life



Dimensions



Scope of delivery

Set of 3 separable connectors, silicone stress control elements, earthing set, screw cable lug for main conductor, screw cable lug for wire screen, assembly material, assembly instructions

Optional accessory: EGA earthing kit for cables with tape screen (see Connecting technology)

Note: Other T-shaped separable connectors (cross-sections, class 5) available on request

Type	L mm	B mm	H mm	min. Ø over core insulation after removal of the outer conductive layer mm	12 kV	17.5 kV	24 kV	36 kV	Art.-No.	
					Nominal cross section mm ²					
U_0/U_m 6/10 (12) kV - 12.7/22 (24) kV										
CTS 1250A 24kV	400-630	EGA M12 KS	205	87	310	33.4	500 - 630	400 - 630	400 - 630	309283
U_0/U_m 12/20 (24) kV - 19/33 (36) kV										
CTS 1250A 36kV	400-630	EGA M12 KS	205	87	310	39.1		630	400 - 630	309284



CTKS 630A T-shaped separable coupling connector

for all 1-core polymeric cables, for separable connector type CTS

Cellplex T-shaped separable coupling connectors CTKS are suitable for connecting all polymeric-insulated 1-core cables (PVC, PE, XLPE, EPR), with different types of semi-conductive layers (graphite-coated or strippable) and screen design (wire or tape screen) to the back of T-shaped separable connectors type CTS.

Characteristics

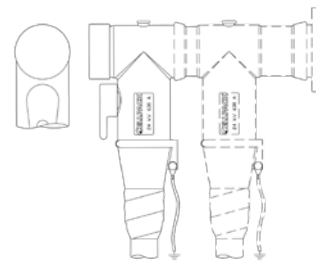
- With capacitive measuring point
- Individually tested
- Outer semi-conductive layer made of semi-conductive EPDM provides protection from exposed electrical parts
- Cable sheath insulation fault test may be performed while under voltage
- For copper and aluminium conductors
- Quick, safe and easy assembly
- Suitable for a wide range of applications due to integrated screw cable lug

Application/Suitability

- Indoor
- Voltage level**
- $U_0/U (U_m)$ 6/10 (12) kV - 19/33 (36) kV
- Test standards**
- CENELEC HD 629.1 (DIN VDE 0278, part 629-1)
- Storage conditions/Shelf life**
- Unlimited shelf life



Dimensions



Scope of delivery

Set of 3 separable coupling connectors, silicone stress control elements, earthing set, screw cable lug for main conductor, assembly material, assembly instructions

Optional accessory: EGA earthing kit for cables with tape screen (see Connecting technology)

Note: T-shaped separable coupling connector for alternative cross-sections and for class 5 conductors on request

Type	L mm	B mm	H mm	min. Ø over core insulation after removal of the outer conductive layer mm	12 kV	17.5 kV	24 kV	36 kV	Art.-No.	
					Nominal cross section mm ²					
$U_0/U (U_m)$ 6/10 (12) kV - 12.7/22 (24) kV										
CTKS 630A 24kV	25-70 EGA	290	74	250	14.7	50 - 95	25 - 95	25 - 70		256838
	95-240 EGA	290	74	250	22.0	150 - 240	120 - 240	95 - 240		256839
$U_0/U (U_m)$ 12/20 (24) kV - 19/33 (36) kV										
CTKS 630A 36kV	35-95	310	85	250	22.0			95 - 95	35 - 95	257581
	150-240	310	85	250	30.8			240 - 240	150 - 240	257582
	240-400	310	85	250	31,5			300 - 400	240 - 400	353314



CTKSA

Coupling surge arrester

Class DH, for separable connector type CTS

The Cellplux surge arrester CTKSA Class DH are designed to protect encapsulated medium voltage systems. The CTKSA coupling surge arresters are specifically designed for mounting on shielded, screw-type Cellpack cable connections and comply with the international standards IEC 60099-4 and IEC 60071.

Characteristics

- With capacitive measuring point
- Individually tested
- Safe-to-touch as the EPDM body is protected by outer semiconductive screen and it is connected to earth
- Quick, safe and easy assembly

Application/Suitability

- Indoor
- Outdoor

Storage conditions/Shelf life

- Unlimited shelf life

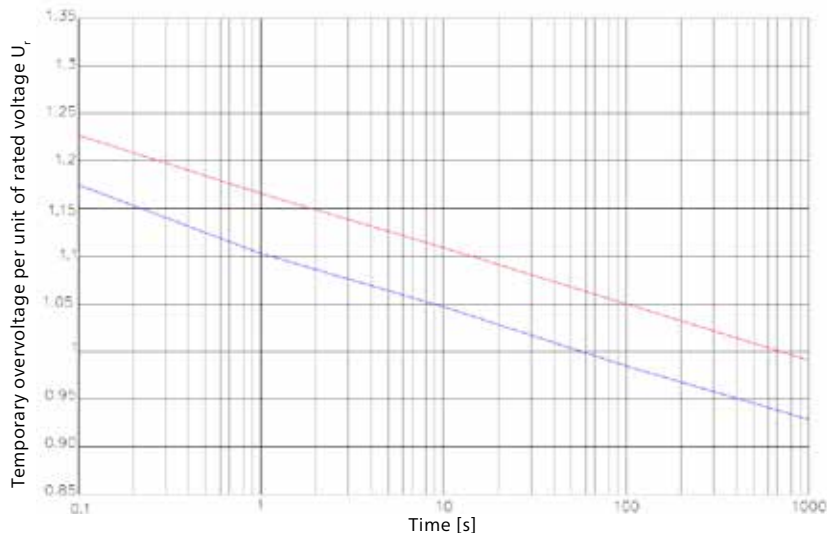


Scope of delivery

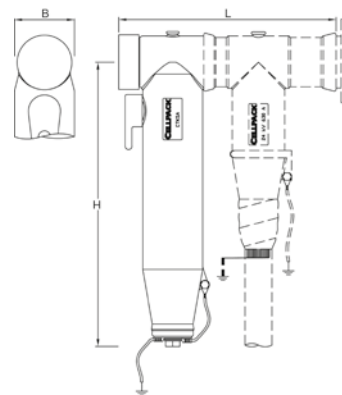
Set of 3 surge arresters, assembly material, assembly instructions

Power frequency versus time characteristic (TOV)

(initial temperature: 60°C)



Dimensions



Type		L mm	B mm	H mm	Art.-No.
CTKSA	8 kV	290	80	380	423851
	12 kV	290	80	380	423852
	18 kV	290	80	380	423853
	19,5 kV	290	80	380	423854
	22 kV	290	80	380	423855
	24 kV	290	80	380	423856
	34 kV	290	80	380	423857

Technical Data							
Rated discharge current, I _n [kA]	10						
High current impulse 4/10 μs [kA]	100						
Rated short-circuit current [kA]	20						
Repetitive charge transfer rating, Q _{rs} [C]	0,5						
Thermal charge transfer rating, Q _{th} [C]	1,1						
Technical Data / Type	8 kV	12 kV	18 kV	19,5 kV	22 kV	24 kV	34 kV
Rated voltage, U _r [kV]	10,0	15,0	22,5	24,0	27,0	30,0	42,0
Maximum continuous operating voltage, U _c [kV]	8,0	12,7	18,3	19,5	22,0	24,4	34,0
Residual voltage (IEC 60099-4) [kV] with:							
Steep current impulse (1/T, T < 20 μs)	28,3	42,5	63,8	68,0	76,5	85,0	119,0
Lightning impulse 8/20 μs:							
5 kA	24,8	37,2	55,7	59,6	67,0	74,4	104,0
10 kA	26,9	40,3	60,5	64,4	72,5	80,5	112,8
20 kA	29,3	44,0	66,0	70,4	79,2	88,0	123,2



ZS Accessory kit

for separable connectors

The ZS-CTS accessory set is designed for the reinstallation of T-shaped separable connectors CTS to switching equipment and transformers having an outer cone system type C, in accordance with EN 50180 and EN 50181. The ZS-CPS / CPES / CPAS Accessory set is suitable for installation of End-Plugs, Test Kits and Voltage Sensors in Type C separable connectors.

Characteristics

- Easy assembly

Application/Suitability

- Re-installation of type CTS separable connectors
- Re-installation of End-Plugs / Installation of CPS, CPES, CPAS.

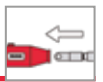


Scope of delivery

ZS-CTS: Set of 3 contact pins with shear head bolt, 6 Cleaning tissues, 3 Lubricants (GM1), 1 slide-on applicator AH3, Assembly instruction

ZS-CPS/CPES/CPAS: 9 Cleaning tissues, 6 Lubricants (GM1), 3 pairs protective gloves and 1 slide-on applicator AH2

Type	Art.-No.
ZS CTS 630A	257622
ZS CTS 1250A	374292
ZS CPS/CPES/CPAS	365078



CIK

Voltage-resistant insulating cap

for bushings type A 250A and type C 630A

The voltage-resistant insulating caps CIK are suitable for electrical insulation of bushings (outer cones) type A 250A and type C 630A on transformers and gas-insulated switchgears up to 36 kV, in accordance with EN 50180 and EN 50181.

Characteristics

- Submersible
- Outer semi-conductive layer made of semi-conductive EPDM provides protection from exposed electrical parts
- Easy assembly

Application/Suitability

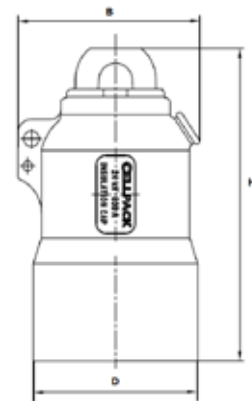
- Indoor
- Outdoor

Voltage level

- $U_0/U (U_m)$ 6/10 (12) kV - 19/33 (36) kV

Storage conditions/Shelf life

- Unlimited shelf life



Scope of delivery

Set of 3 voltage resistant insulating caps, assembly material, assembly instructions

Type	B	D	H	Art.-No.
	mm			
$U_0/U (U_m)$ 6/10 (12) kV - 12,7/22 (24) kV				
CIK 250A 24kV	82	68	116	265023
CIK 630A 24kV	93	82	160	372710
$U_0/U (U_m)$ 6/10 (12) kV - 19/33 (36) kV				
CIK 630A 36kV	93	82	160	265024



CVS 250A

Connecting element up to 24 kV

for separable connectors type CWS and type CGS, for outer cone system terminals type A

The connecting element CVS is suitable for connecting two elbow separable connectors type CWS 250A and/or straight separable connectors CGS up to 24 kV. Its dimensions correspond to outer cone systems type A, in accordance with EN 50180 and EN 50181.

Characteristics

- Individually tested
- Safe and easy to handle
- Easy assembly

Application/Suitability

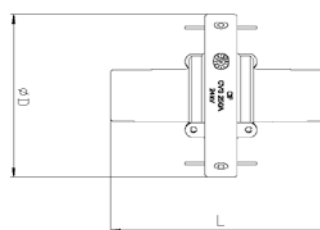
- Indoor
- Voltage level**
- U_0/U_m 6/10 (12) kV - 12.7/22 (24) kV
- Storage conditions/Shelf life**
- Unlimited shelf life



Scope of delivery

Set of 3 connecting elements, assembly material, assembly instructions

Dimensions



Type	L mm	Ø D mm	Art.-No.
U_0/U_m 6/10 (12) kV - 12.7/22 (24) kV			
CVS 250A 24kV	136	100	225844



CKS 1250A

Coupling element up to 36 kV

for T-shaped separable connectors type CTS

The coupling element CKS is suitable for connecting two T-shaped separable connectors CTS up to 36 kV. It can be used for 630 A and 1250 A applications.

Characteristics

- Individually tested
- Safe and easy to handle
- Easy assembly

Application/Suitability

- Indoor
- Voltage level**
- U_0/U_m 19/33 (36) kV

Test standards

- IEC 60137

Storage conditions/Shelf life

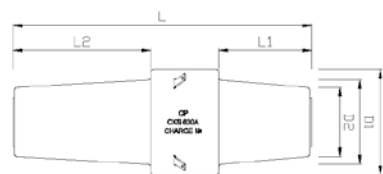
- Unlimited shelf life



Scope of delivery

Set of 3 coupling elements, assembly material, assembly instructions

Dimensions



D = Outer diameter

Type	L mm	L1 mm	L2 mm	D mm	D1 mm	D2 mm	Art.-No.
U_0/U_m 19/33 (36) kV							
CKS 1250A 36kV	196.5	61.5	91	70	56	46	450152



CPAS End-plugs

for Cellplex separable connector type CTS 630A / 1250A

The CPAS End-plug establishes connection on front side of the CTS 630A / 1250A separable connectors. CPAS together with Test and earthing kit CPES makes it possible to carry out testing of cables installed with CTS separable connectors without connecting them to Switchgear.

Characteristics

- Individually tested
- Safe and easy to handle
- Easy Assembly

Application/Suitability

- Indoor
- Outdoor

Voltage level

- $U_0/U (U_m)$ 6/10 (12) kV - 19/33 (36) kV

Storage conditions/ Shelf life

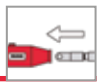
- Unlimited shelf life



Scope of delivery

Set of 3 End-plugs,, assembly material, assembly instructions.

Type	Art.-No.
$U_0/U (U_m)$ 6/10 (12) kV - 19/33 (36) kV	
CPAS	367094



CPES

Test and earthing kit

for Cellplux separable connectors type CTS and type CTKS

The test and grounding set is used on the one hand to connect the respective cable conductors to a test voltage source and on the other hand to establish a reliable grounding of cable conductors on all Cellplux T-connectors type CTS and CTKS.

Characteristics

- Safe and easy to handle

Application/Suitability

- Cable testing
- Cable fault location
- Earthing for work
- Phase comparison

Voltage level

- $U_0/U(U_m)$ 6/10 (12) kV - 19/33 (36) kV



Scope of delivery

Chest, test adapter, set of 3 earthing adapters, assembly material, assembly instructions

Type	Art.-No.
$U_0/U(U_m)$ 6/10 (12) kV - 19/33 (36) kV	
CPES	414307



CPS Test kit

for Cellplux separable connectors type CTS and type CTKS

The test set is used to connect the respective cable conductors to a test voltage source on all Cellplux T-connectors type CTS and CTKS.

Characteristics

- Safe and easy to handle

Application/Suitability

- Cable testing
- Cable fault location
- Phase comparison

Voltage level

- U_0/U_m 6/10 (12) kV - 19/33 (36) kV



Scope of delivery

Chest, set of 3 test adapters, assembly material, assembly instructions

Type	Art.-No.
U_0/U_m 6/10 (12) kV - 19/33 (36) kV	
CPS	302227