

LV Resin Cable Joints - Straight

suitable for PVC or XLPE cable, 1kV



Armoured Cables / CM range

Max Cable Size 4 core (mm ²)	Basic Joints		Basic Joints plus Mechanical Connectors (suitable for both (aluminum & copper))	
	Part No	Earth Kit included	Part No	Connectors included
1.5 - 6.0	CM0 / ST6	Braid & Constant Force Springs	CM0 / ST6 +C	4 x (1.5 - 6.0mm) connectors
10 - 16.0	CM1 / ST16	Braid & Constant Force Springs	CM1 / ST16 +C	4 x (10 - 16mm) connectors
25	CM2 / ST25	Braid & Constant Force Springs	CM2 / ST25 +C	4 x (25 - 35mm) connectors
35 - 70	CM2.5 / ST35/70	Braid & Constant Force Springs	CM2.5 / ST35/70 +C	4 x (50 - 70mm) connectors
70 - 95	CM3 / ST95	Braid & Constant Force Springs	CM3 / ST95 + C	4 x (95 - 120mm) connectors
95 - 120	CM4 / ST120	Braid & Constant Force Springs	CM4 / ST120 +C	4 x (95 - 120mm) connectors
150 - 185	CM5 / ST185	Braid & Constant Force Springs	CM5 / ST185 +C	4 x (150 - 185mm) connectors
240 - 300	CM6 / ST300	Braid & Constant Force Springs	CM6 / ST300 +C	4 x (300mm) connectors
400	CM7 / ST400	Braid & Constant Force Springs	CM7 / ST400 +C	4 x (400mm) connectors

Quick selection - Armoured cable using Mechanical Connectors																	
No of cores	Cable size (mm ²)																
	1.5	2.5	4	6	10	16	25	35	50	70	95	120	150	185	240	300	400
1									CM1 / ST16		CM2.5 / ST35/70			CM3 / ST95		CM4 / ST120	CM6 / ST300
2	CM0 / ST6					CM1 / ST16	CM2 / ST25		CM2.5 / ST35/70		CM3 / ST95		CM4 / ST120		CM5 / ST185		CM6 / ST300
3	CM0 / ST6		CM1 / ST16		CM2 / ST25		CM2.5 / ST35/70		CM3 / ST95		CM4 / ST120		CM5 / ST185		CM6 / ST300		CM7 / ST400
4	CM0 / ST6		CM1 / ST16		CM2 / ST25		CM2.5 / ST35/70		CM3 / ST95		CM4 / ST120		CM5 / ST185		CM6 / ST300		CM7 / ST400
5	CM0 / ST6	CM1 / ST16		CM2 / ST25		CM2.5 / ST35/70		CM3 / ST95	CM4 / ST120	CM6 / ST300						CM7 / ST400	

Joints are available with compression ferrules which will also create more room when jointing.

Unarmoured Cables / CM Ex range

Max Cable Size 4 Core (mm)	Basic Joints		Basic Joints (suitable for both (aluminum & copper))	
	Part No.	Part No	Part No	Connectors Included
1.5 - 10	CM0 / ST6 EX / 80163	CM0 / ST6 EX+C	CM0 / ST6 EX+C	4 x (1.5 - 6.0mm) connectors
16	CM1 / ST16 EX / 80164	CM1 / ST16 EX+C	CM1 / ST16 EX+C	4 x (10.0 - 16mm) connectors
25 - 35	CM2 / ST25 EX	CM2 / ST25 EX+C	CM2 / ST25 EX+C	4 x (25 - 35mm) connectors
50 - 70	CM2.5 ST35/70 EX / 80165	CM2.5 ST35/70 EX+C	CM2.5 ST35/70 EX+C	4 x (50 - 70mm) connectors
95	CM3 / ST95 EX / 8.000907	CM3 / ST95 EX+C	CM3 / ST95 EX+C	4 x (95 - 120mm) connectors
120 - 150	CM4 / ST120 EX / 8.000908	CM4 / ST120 EX+C	CM4 / ST120 EX+C	5 x (95 - 120mm) connectors
185 - 240	CM5 / ST185 EX	CM5 / ST185 EX+C	CM5 / ST185 EX+C	4 x (150 - 185mm) connectors
300 - 400	CM6 / ST300 EX / 8.000909	CM6 / ST300 EX+C	CM6 / ST300 EX+C	4 x (300mm) connectors
400+	CM7 / ST400 EX	CM7 / ST400 EX+C	CM7 / ST400 EX+C	4 x (400mm) connectors



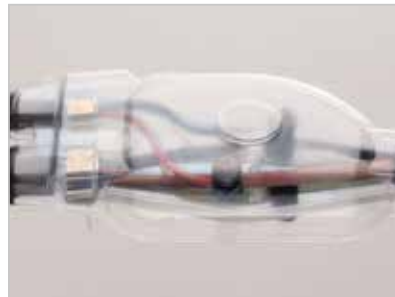
Quick selection - Un-armoured using Mechanical Connectors																	
No of cores	Cable Size (mm ²)																
	1,5	2,5	4	6	10	16	25	35	50	70	95	120	150	185	240	300	400
1									CM1 / ST16		CM2 / ST25		CM2.5 / ST35/70		CM3 / ST95		CM4 / ST120
2	CM0 / ST6EX							CM1 / ST16 EX		CM2.5 / ST35/70 EX		CM3 / ST95		CM4 / ST120		CM5 / ST185	
3	CM0 / ST6EX					CM1 / ST16 EX		CM2 / ST25		CM2.5 / ST35/70	CM3 / ST95		CM4 / ST120			CM5 / ST185	
4	CM0 / ST6EX					CM1 / ST16 EX		CM2 / ST25		CM2.5 / ST35/70	CM3 / ST95		CM4 / ST120		CM5 / ST185		CM6 / ST300

LV Resin Cable Joints - Branch

suitable for PVC or XLPE cable, 1kV

Service Branch Joints / CB range

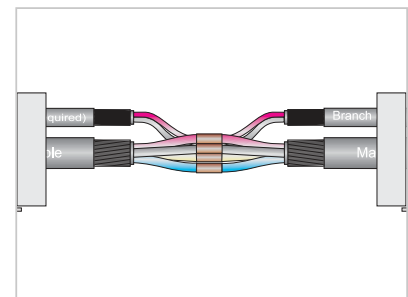
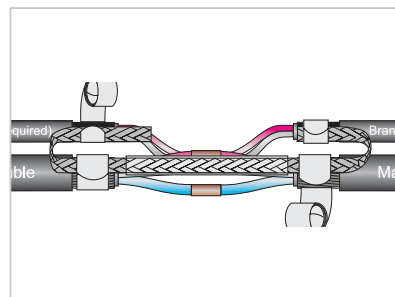
Main Cable Size, 2,3,4 core (mm ²)	Max Branch Cable 2,3,4 core (mm ²)	Basic Joints NO Connectors	Basic Joints Plus Earth Kit & Connectors	
		Part No	Part No	Connectors Included
Armoured & Unarmoured Cable - Uncut & Cut Main				
1.5 - 2.5	2,5	CB0 / 80169	CB0+C	4 x (1.5 - 6.0mm) Branch connectors (Unarmoured Only)
1.5 - 6.0	6	CB0.5 / MB6	CB0.5 / MB6+C	4 x (1.5 - 6.0mm) Branch connectors
10.0 - 16.0	16	CB1 / MB16	CB1 / MB16+C	4 x (10 - 16mm) Branch connectors
25.0 - 35.0	35	CB2 / MB35	CB2 / MB35+C	4 x (25 - 35mm) Branch connectors
50.0 - 70.0	70	CB3 / MB70	CB3 / MB70+C	Please contact our technical department
95.0 - 120	120	CB4 / MB120	CB4 / MB120+C	Please contact our technical department
240 - 300	300	CB6 / MB300	CB6 / MB300+C	Please contact our technical department



Service Branch Joints / CU range

“Universal” joints for branch & straight jointing

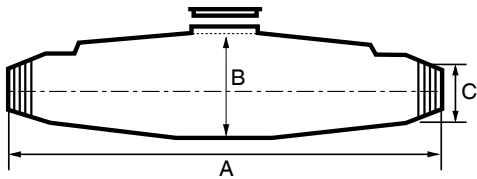
Main Cable Size 2,3 & 4 core (mm ²)	Max Branch Cable 2,3,4 core (mm ²)	Basic Joints	Basic Joints plus Mechanical Connectors	
		Part No.	Part No	Connectors Included
Armoured & Unarmoured Cable - Uncut Main				
1.5 - 2.5	1 x 2.5	CU0	CU0+C	4 x 1.5 - 6mm Pre insulated branch connectors
4.0 - 6.0	2 x 6.0	CU1 / 8.003061	CU1+C	4 x 6.0 - 10mm Pre insulated branch connectors
10 - 25.0	2 x 25	CU2 / 8.003062	CU2+C	4 x 16 - 25mm Pre insulated branch connectors
35 - 50.0	2 x 35	CU3	CU3+C	Please contact our technical department
70 - 95.0	2 x 35	CU4	CU4+C	Please contact our technical department
120 - 185	2 x 35	CU5	CU5+C	Please contact our technical department



Joint Shell Dimensions

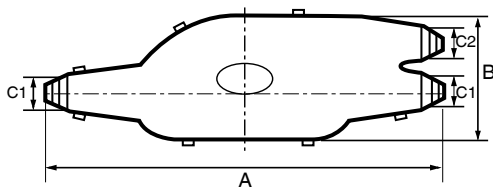
Straight Joint Dimensions					
Product Name	Shell style	Length (mm)	Diameter (mm)	Cable entry (mm)	Resin Content
CM0 / Straight 6 / 80163	Injection Moulded - Snaplock	200	35	5 - 20mm	200ml
CM1 / Straight 16 / 80164	Injection Moulded - Snaplock	250	45	8 - 30mm	350ml
CM2 / Straight 25 / 80164B	Injection Moulded - Snaplock	320	60	10 - 34mm	750ml
CM2.5 / Straight 35/70 / 80165	Injection Moulded - Snaplock	355	72	26 - 53mm	1.2 Litres
CM3 / Straight 95 / 8.000907	Injection Moulded - Snaplock	450	75	30 - 48mm	1.65 Litres
CM4 / Straight 120 / 8.000908	Injection Moulded - Snaplock	547	108	37 - 67mm	3.3 Litres
CM5 / Straight 185 / 8.0009085	Vacuum Formed	700	140	62 - 68mm	8.5 Litres
CM6 / Straight 300 / 8.000909	Vacuum Formed	800	160	48 - 88mm	12.0 Litres
CM7 / Straight 400	Vacuum Formed	1345	155	70 - 105mm	15.0 Litres

CM0 - CM7

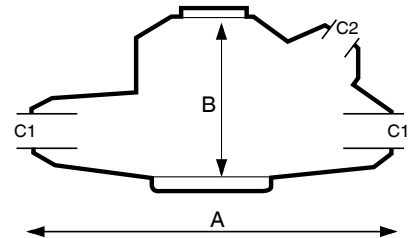


Branch Joint Dimensions					
Joint Type	Shell style	(A) Length (mm)	(B) Width (mm)	(C) Cable entry (mm)	Resin Content
CB0 / 80169	Injection Moulded - Snaplock	190	60	10 - 20mm	270ml
MB6 / CB0.5	Injection Moulded - Snaplock	220	76	10 - 22mm	450 ml
MB16 / CB1	Injection Moulded - Snaplock	335	110	10 - 30mm	1,85
MB35 / CB2	Injection Moulded - Snaplock	420	120	15 - 30mm	2,65
MB70 / CB3	Vacuum Formed	490	125	15 - 40mm	4 Litres
MB120 / CB4	Vacuum Formed	570	160	15 - 50mm	9.5 Litres
MB300 / CB6	Vacuum Formed	740	250	45 - 75mm	23.5 Litres

CB0 - CB6



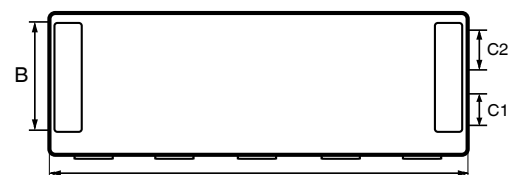
CPJ



Branch Joint Dimensions					
Joint Type	Shell style	(A) Length (mm)	(B) Width (mm)	(C) Cable entry (mm)	Resin Content
CPJ120	Injection Moulded - Snaplock	160	92	10 - 25mm	450 ml
CPJ95	Injection Moulded - Snaplock	142	73	10 - 20mm	200ml
CB0	Injection Moulded - Snaplock	190	60	10 - 20mm	270ml

Type	A	B	C1		C2	
			min	max	min	max
CU0 range	175	40	8	20	8	15
CU1 range	220	65	13	22	13	21
CU2 range	300	80	19	29	18	22
CU3 range	400	95	23	35	21	25
CU4 range	500	110	26	50	25	30
CU5 range	500	160	38	65	39	50

CU0 - CU5



LV Resin Cable Joints - Special Applications

suitable for PVC or XLPE cable, 1kV

Cathodic Protection Joints

Approved by many oil and utility companies throughout the world, the main applications for these joints include: Jointing of single core DC feeder to anode cable for cathodic protection of pipelines, jetties, tanks and buried structures.

Two variants of CP joints are offered:

CPJ - The classic cathodic protection joint for use when upright branch joints are required.

CB0 - A "Y"-shaped joint for horizontal branch jointing applications.

Max cable Size single core (mm ²)	Max Branch single core (mm ²)	Basic Kit - NO CONNECTOR	Kit with Split bolt line tap	
		Part No.	Part No.	Kit Includes
120	95	CPJ120	CPJ120+C	Joint + line tap
95	95	CPJ95	CPJ95+C	Joint + line tap
95	95	CB0	CB0+C	Joint + line tap



Multi Control & Pilot Cables / CML Range

Especially designed for Control/Telemetry applications and for joining Pilot cables. Suitable for multi-core cables 600/1000V, PVC insulated, armoured or unarmoured. Nylon spacer tapes are included for easy bundling of cores and to ensure even penetration of resin.



No of cores	Core size 1.5 - 2.5 mm ²		Core size 4 - 6 mm ²	
	Armoured	Unarmoured	Armoured	Unarmoured
2 - 4	CM0L	CM0LEX	CM0L	CM0LEX
5	CM0L	CM0LEX	CM1L	CM1LEX
7 - 8	CM1L	CM1LEX	CM2L	CM2LEX
10 - 11	CM2L	CM2LEX	CM2L	CM2LEX
16 - 27	CM3L	CM3LEX	CM3L	CM3LEX
30 - 48	CM4L	CM4LEX		

Insulated ferrules for CML range should be ordered separately (one ferrule per core).

0.5 - 1.0 mm² - use Part No KX670; 1.5 - 2.5 mm² - use Part No KX680; 4.0 - 6.0 mm² - use Part No KX700.

Multipair Telecom Cables / CML Range

For multipair cables, PVC insulated / PVC oversheathed, conductor Ø 0.9 mm, armoured or unarmoured.



No of pairs	Armoured	Unarmoured	No of pairs	Armoured	Unarmoured
2	CM0L	CM0LEX	25	CM2L	CM1LEX
5	CM1L	CM0LEX	40	CM3L	CM2LEX
10	CM1L	CM1LEX	50	CM4L	CM2LEX
15	CM2L	CM1LEX	100	CM4L	CM3LEX

Insulation-displacement connectors (Part No MCT) should be ordered separately (2 per pair).

LV Resin Cable Joints - Special Applications

suitable for PVC or XLPE cable, 1kV

Mines & Quarries / CMMQ Range

Supplied with required accessories including:

- Self-amalgamating tape to insulate ferrules.
- Special spiral spacers for core separation.
- Stainless steel mesh sleeve.
- 11 kV version also available.



Cable (mm ²)	No of cores	Part No	Cable (mm ²)	No of cores	Part No	Cable (mm ²)	No of cores	Part No	Cable (mm ²)	No of cores	Part No	Cable (mm ²)	No of cores	Part No
1.5	2	CM1MQ	6	2	CM1MQ	25	2	CM2MQ	70	2	CM4MQ	150	2	CM5MQ
	3	CM1MQ		3	CM1MQ		3	CM3MQ		3	CM4MQ		3	CM5MQ
	4	CM1MQ		4	CM1MQ		4	CM3MQ		4	CM4MQ		4	CM6MQ
2.5	2	CM1MQ	10	2	CM1MQ	35	2	CM3MQ	95	2	CM4MQ	185	2,3,4	CM6MQ
	3	CM1MQ		3	CM2MQ		3	CM3MQ		3	CM4MQ	240	2,3,4	CM6MQ
	4	CM1MQ		4	CM2MQ		4	CM3MQ		4	CM5MQ	300	2,3,4	CM6MQ
4	2	CM1MQ	16	2	CM2MQ	50	2	CM3MQ	120	2	CM5MQ			
	3	CM1MQ		3	CM2MQ		3	CM4MQ		3	CM5MQ			
	4	CM1MQ		4	CM2MQ		4	CM4MQ		4	CM5MQ			

Oil & Petrochem / CMOP Range

Supplied with required accessories inc:

- Earth continuity components for lead covered (LV) cables.



Cable (mm ²)	No of cores	Part No	Cable (mm ²)	No of cores	Part No	Cable (mm ²)	No of cores	Part No	Cable (mm ²)	No of cores	Part No	Cable (mm ²)	No of cores	Part No
1.5	2	CM1OP	6	2	CM2OP	25	2	CM2OP	70	2	CM4OP	150	2	CM5OP
	3	CM1OP		3	CM2OP		3	CM3OP		3	CM4OP		3	CM5OP
	4	CM1OP		4	CM2OP		4	CM3OP		4	CM4OP		4	CM6OP
2.5	2	CM1OP	10	2	CM2OP	35	2	CM3OP	95	2	CM4OP	185	2	CM5OP
	3	CM1OP		3	CM2OP		3	CM3OP		3	CM4OP		3	CM6OP
	4	CM1OP		4	CM2OP		4	CM3OP		4	CM5OP		4	CM6OP
4	2	CM1OP	16	2	CM2OP	50	2	CM3OP	120	2	CM5OP			
	3	CM2OP		3	CM2OP		3	CM4OP		3	CM5OP			
	4	CM2OP		4	CM2OP		4	CM4OP		4	CM5OP			

1.9/3.3 kV Joints

Suitable for PVC or XLPE/SWA/PVC oversheathed, 1900/3300V cables, with stranded copper or aluminium conductors, to BS546.



Cable (mm ²)	No of cores	Part No	Cable (mm ²)	No of cores	Part No	Cable (mm ²)	No of cores	Part No	Cable (mm ²)	No of cores	Part No	Cable (mm ²)	No of cores	Part No
16	3	CM2M	70	1	CM2M	120	3	CM4M	240	1	CM3M	400	3	CM6M
25	3	CM3M	70	3	CM3M	150	1	CM3M	240	3	CM6M	500	1	CM4M
35	3	CM3M	95	1	CM2M	150	3	CM5M	300	1	CM3M	630	1	CM4M
50	1	CM2M	95	3	CM4M	185	1	CM3M	300	3	CM6M	800	1	CM4M
50	3	CM3M	120	1	CM2M	185	3	CM5M	400	1	CM4M	1000	1	CM4M

LV Resin Cable Joints - Low Smoke Zero Halogen

suitable for PVC or XLPE cable, 1kV

Distinguished by its yellow- tinted injection-moulded shells, Filoform's range of Low Smoke Zero Halogen cable joints has been especially developed to meet the increasing demand for joints that match the characteristics of modern flame retardant, fire resistant and low smoke cables.

To reflect the specialist application, these joints can be installed without the need for dedicated tools or the application of heat.

All of the popular and well- established features of standard Filoform joints have been retained. Internationally, there are several standards that regulate fire behaviour. Filoform products conform to the following national standards:

- UK:** - BS 476 Part 7, Class 1Y rating.
- Germany:** - DIN 4102/part 1, B1 rating.
- France:** - NFP 92 501, 5 & 16, M2 rating.

A typical kit consists of an outer shell manufactured from UV stable , low smoke, zero halogen, flame retardant material that matches or exceeds the relevant properties of similarly specified cable.

For the majority of applications it is only the shell that requires specialist fire-sensitive properties. In these cases Filoform's standard two-part polyurethane resin is supplied in easy-mix pouches.

When specifications call for the resin to also be flame retardant, halogen-free and low smoke, joints are shipped with Filoform's CR171H resin which is flame retardant to V0 rating of UL94.



LV Resin Cable Joints - Low Smoke Zero Halogen

suitable for PVC or XLPE cable, 1kV

Specifications - Filoform Low Smoke Zero Halogen cable joints		
Properties of shell	Rating	Relevant standard
Flammability		
Flame retardant		
Flame class rating: 3mm	V-0	UL94
Flame class rating: 1mm	V-2	UL94
Glow wire test, 1 mm, 850 °C	Pass	IEC 695-2-1
Low Smoke		
Smoke density 4 min	Dm < 200	AIRBUS Standard ABD 0031
Halogens	Free	DIN VDE 472 part 815
Mechanical		
Tensile strength at yield (speed 50mm/min)	63 Mpa	ISO 527, DIN 53455
Impact		
Charpy Impact, notched	30 kJ/m ²	ISO 179/2C
Thermal		
Thermal conductivity	0.20 W/m °C	DIN 52612
Electrical		
Dielectric strength	17kV/mm	IEC 243, ASTM D 149
Volume resistivity	10 ¹⁵ Ohm.m	IEC 93, DIN53482
Surface resistivity	10 ¹⁵ Ohm	IEC 93, DIN53482
Properties of resin type CR171H		
Flammability - Flame class rating: 6mm	V-0	UL94
Physical properties		
Operating temperature	-40° C to +105° C	
Thermal conductivity	0.75 W/mK	
Shrinkage	Low	
Coefficient of linear expansion	Low	
Electrical properties		
Volume resistivity	11 - 13 log Ohm	
Surface resistivity	12 - 14 log Ohm	
Electric strength	> 16 MV/m	
Permittivity	3.2 @ 1 KHz	

Main Cable 2, 3 & 4 core (mm ²)	Branch Cable 2,3 & 4 core (mm ²)	Part No
Straight Joints		
4 x 6mm	N/A	CM0/ST6LSHF
4 x 10mm	N/A	CM1/ST16LSHF
4 x 16, 25mm	N/A	CM2/ST25/LSHF
4 x 35, 50mm	N/A	CM2.5/ST35/70LSHF
4 x 70, 95mm	N/A	CM3/ST95/LSHF
4 x 95, 120, 150, 185mm	N/A	CU5LSHF
4 x 240, 300, 400mm	N/A	CM56LSHF
Branch Joints		
4 x 6mm	4 x 6mm	CU1LSHF
4 x 10, 16, 25mm	4 x 10, 16, 25mm	CU2LSHF
4 x 35mm	4 x 35mm	CU3LSHF
4 x 35mm	4 x 35mm	CU4LSHF
4 x 35mm	4 x 35mm	CU5LSHF
4 x 95, 120mm	4 x 95, 120mm	CBM1LSHF
4 x 120, 150, 185mm	4 x 120, 150, 185mm	CBM2LSHF

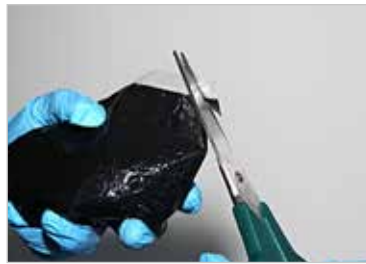
Filiform Cold-Pour Two-Part Resins

Features

- Two-part Polyurethane resin in protective aluminium foil.
- Mixing is performed in sealed conditions - no need for skin contact but safety gloves are provided.
- Controlled curing temperature designed to be compatible with PVC, XLPE, EPR, Polythene and PILC cables.
- Clear mixing instructions on every pack.
- Full Health & Safety labelling.
- Batch number & use-by-date on every pack.
- Designed to meet the requirements of BS 6910, BS7888, CENELEC HD623 S1 and EN50393:2006.
- The same well-proven high quality resin formula is used as standard throughout both the LV & MV ranges.

Also available

- Flame retardant, halogen-free resin to VO rating of UL94.
- Traffic systems resin - Two-part, fast-curing toughened polyurethane resin designed for the encapsulation of speed sensors, junction boxes and the bases of control cabinets.
- Re-enterable resin - Two-part polyurethane resin that can be removed after curing. Ideal for encapsulating expensive components or multicore and multipair cables where subsequent repair may be required.



Item number	Description	Content	Colour	Order unit
804652	Filofill P2654 200ml	200ml	black	15 pcs/carton
804655	Filofill P2654 350ml	350ml	black	10 pcs/carton
804656	Filofill P2654 450ml	450ml	black	10 pcs/carton
804658	Filofill P2654 750ml	750ml	black	8 pcs/carton
804663	Filofill P2654 1200ml	1200ml	black	2 pcs/carton
804664	Filofill P2654 1500ml	1500ml	black	1 pcs/carton
804665	Filofill P2654 2000ml	2000ml	black	2 pcs/carton