

## SEANEX Cable Connector, Size 3A, 72.5 kV

The SEANEX cable connector offers a robust inner cone HV connection system.

### Application:

- Pluggable separable connector for 66 kV offshore applications

### Features:

- Quick and simple installation
- The rotatable bell flange enables 360° installation
- Rapid separation and change of cable and equipment possible
- Touch-safe thanks to metallic encapsulation
- Maintenance-free
- Salt water resistant
- Routine-tested from factory
- Offshore certified by DNV GL and IEC 63026
- Separate electrical and mechanical contact
- Electricity flows in a line – no angles, corners or edges
- Transition box is eliminated
- No twisting of cables
- Connection can be separated without loss of quality



Picture may vary.

### Technical Data

<b>Article no.</b>	<b>837 999 999 xxxxx</b>	
<b>Max. system voltage</b>	<b>U<sub>m</sub> (kV)</b>	<b>72,5</b>
<b>Size</b>		<b>3A</b>
<b>Type designation</b>		<b>dry-type termination</b>
<b>Applicable standards</b>		<b>IEC 63026</b>
<b>Working place</b>		<b>offshore, outdoor and indoor</b>
<b>Nominal voltage</b>	<b>U<sub>n</sub> (kV)</b>	<b>66</b>
<b>Conductor residual voltage</b>	<b>U<sub>0</sub> (kV)</b>	<b>36</b>
<b>Rated power frequency withstand voltage</b>	<b>1 min (kV)</b>	<b>140</b>
<b>Rated lightning impulse withstand voltage BIL</b>	<b>(kV)</b>	<b>325</b>
<b>Heating cycles</b>	<b>(kV)</b>	<b>72</b>
<b>Partial discharge test &lt; 5pc at</b>	<b>(kV)</b>	<b>54</b>
<b>Rated power frequency withstand voltage - 30 min</b>	<b>(kV)</b>	<b>90</b>
<b>Partial discharge test &lt; 2pC at</b>	<b>(kV)</b>	<b>54</b>
<b>Nominal current</b>	<b>I<sub>N</sub> (A)</b>	<b>1250</b>
<b>Rated short-time withstand current</b>	<b>(kA)</b>	<b>40</b>
<b>Rated impulse current CALCULATED</b>	<b>(kA)</b>	<b>150</b>
<b>Conductor material</b>		<b>copper or aluminium</b>
<b>Article no.</b>	<b>837 999 999 xxxxx</b>	
<b>Conductor cross section range for RM</b>	<b>(mm<sup>2</sup>)</b>	<b>95 - 800</b>
<b>Diameter of insulating</b>	<b>(mm)</b>	<b>26 - 55</b>
<b>Connection method</b>		<b>Compression connection</b>
<b>Length outside socket</b>	<b>(mm)</b>	<b>500</b>

## CONNEX Separable Connector, Size 4, up to 72.5 kV

### Application:

- Pluggable separable connector for all XLPE cables
- Available as factory-tested and preassembled field installation cable

### Features:

- The separable connector is installed without any gas- and oilwork at the transformer or GIS
- Considerably reduced installation time and safe installation
- Horizontal, vertical and angled versions for connection to GIS and transformers
- Rapid separation and change of cable and equipment possible
- Touchproof, submersible, and maintenance-free
- Routine-tested from factory

\*<sup>1</sup> depending on conductor cross section and conductor material



Picture may vary.

### Technical Data

<b>Article no.</b>	<b>849 999 999 xxxxx</b>	
<b>Max. system voltage</b>	<b>U<sub>m</sub> (kV)</b>	<b>72,5</b>
<b>Size</b>		<b>4</b>
<b>Type designation</b>		<b>dry-type termination</b>
<b>Applicable standards</b>		<b>IEC 60840:2011</b>
<b>Working place</b>		<b>outdoor and indoor offshore on request</b>
<b>Nominal voltage</b>	<b>U<sub>n</sub> (kV)</b>	<b>60 - 69</b>
<b>Conductor residual voltage</b>	<b>U<sub>0</sub> (kV)</b>	<b>36</b>
<b>Rated power frequency withstand voltage</b>	<b>1 min (kV)</b>	<b>140</b>
<b>Rated lightning impulse withstand voltage BIL</b>	<b>(kV)</b>	<b>325</b>
<b>Heating cycles</b>	<b>(kV)</b>	<b>72</b>
<b>Partial discharge test &lt; 5pc at</b>	<b>(kV)</b>	<b>54</b>
<b>Rated power frequency withstand voltage - 30 min</b>	<b>(kV)</b>	<b>90</b>
<b>Partial discharge test &lt; 2pC at</b>	<b>(kV)</b>	<b>54</b>
<b>Nominal current<sup>*1</sup></b>	<b>I<sub>N</sub> (A)</b>	<b>2500</b>
<b>Rated short-time withstand current</b>	<b>(kA)</b>	<b>50</b>
<b>Rated impulse current CALCULATED</b>	<b>(kA)</b>	<b>160</b>
<b>Conductor material</b>		<b>copper or aluminium</b>
<b>Article no.</b>	<b>849 999 999 xxxxx</b>	
<b>Diameter of conductor</b>	<b>∅ (mm)</b>	<b>9.3 - 55.9</b>
<b>Conductor cross section area</b>	<b>(mm<sup>2</sup>)</b>	<b>95 - 2000</b>
<b>Diameter of insulating</b>	<b>(mm)</b>	<b>33 - 78.5</b>
<b>Connection method</b>		<b>Compression connection</b>
<b>Length outside socket</b>	<b>(mm)</b>	<b>580</b>

## CONNEX Separable Connectors, Size 5-S, up to 145 kV

### Application:

- Pluggable separable connector for all XLPE cables
- Available as factory-tested and preassembled field installation cable

### Features:

- The separable connector is installed without any gas- and oilwork at the transformer or GIS
- Considerably reduced installation time and safe installation
- Horizontal, vertical and angled versions for connection to GIS and transformers
- Rapid separation and change of cable and equipment possible
- Touchproof, submersible, and maintenance-free
- Routine-tested from factory

<sup>1)</sup> depending on conductor cross section and conductor material



Picture may vary.

### Technical Data

<b>Article no.</b>	<b>859 999 999 xxxxx</b>	
<b>Max. system voltage</b>	<b>U<sub>m</sub> (kV)</b>	<b>145</b>
<b>Size</b>	<b>5-S</b>	
<b>Type designation</b>	<b>dry-type termination</b>	
<b>Applicable standards</b>	<b>IEC 60840:2011</b>	
<b>Working place</b>	<b>outdoor and indoor offshore on request</b>	
<b>Nominal voltage</b>	<b>U<sub>n</sub> (kV)</b>	<b>132 - 138</b>
<b>Conductor residual voltage</b>	<b>U<sub>0</sub> (kV)</b>	<b>76 - 80</b>
<b>Rated power frequency withstand voltage</b>	<b>1 min (kV)</b>	<b>275</b>
<b>Rated lightning impulse withstand voltage BIL</b>	<b>(kV)</b>	<b>650</b>
<b>Heating cycles</b>	<b>(kV)</b>	<b>190</b>
<b>Partial discharge test &lt; 5pC at</b>	<b>(kV)</b>	<b>114</b>
<b>Rated power frequency withstand voltage - 30 min</b>	<b>(kV)</b>	<b>190</b>
<b>Partial discharge test &lt; 2pC at</b>	<b>(kV)</b>	<b>114</b>
<b>Nominal current<sup>1)</sup></b>	<b>I<sub>N</sub> (A)</b>	<b>2500</b>
<b>Rated short-time withstand current</b>	<b>(kA)</b>	<b>50</b>
<b>Rated impulse current CALCULATED</b>	<b>(kA)</b>	<b>160</b>
<b>Conductor material</b>	<b>copper or aluminium</b>	
<b>Article no.</b>	<b>859 999 999 xxxxx</b>	
<b>Diameter of conductor</b>	<b>∅ (mm)</b>	<b>9.3 - 50.4</b>
<b>Conductor cross section area</b>	<b>(mm<sup>2</sup>)</b>	<b>95 - 1600</b>
<b>Diameter of insulating</b>	<b>(mm)</b>	<b>36.5 - 76</b>
<b>Connection method</b>	<b>Compression connection</b>	
<b>Length outside socket</b>	<b>(mm)</b>	<b>336</b>

# CONNEX Pluggable Outdoor Termination POT145-C55, Size 6, up to 145 kV, dry-type

Self-supporting, solid-insulated, with plug-in technology for connecting all cables equipped with suitable CONNEX cable connectors:

the CONNEX outdoor termination fulfils the highest requirements for efficiency, environmental safety and flexibility from the moment it is installed in the substation. For rapid replacement of existing terminations. Ideal for tests with a mobile stand.

Versatile use as a plug-in technology solution, allowing a pre-prepared cable to be plugged in and unplugged at any time.



*Picture may vary.*

**At a glance:**

- Self-supporting, dry insulated, with plug-in installation technology
- Meets highest demands for efficiency, environmental safety and flexibility
- Maintenance-free use in substations
- Fast replacement of existing terminations
- Can be used as a flexible interface for connecting e.g. reserve cables, test cables or temporary site cables with CONNEX cable connectors
  
- Oil and gas free, fully dry insulated with silicone, therefore:
  - No handling of insulation materials during installation
  - No leakage or environmental risks, explosion-proof
  - Water and dirt repellent insulator shields
  
- Optional accessories: termination stand

## Technical Data

<b>Article no.</b>	<b>828 191 002</b>	
<b>Size</b>	<b>6</b>	
<b>Max. system voltage</b>	<b>U<sub>m</sub> (kV)</b>	<b>145</b>
<b>Type Termination</b>	<b>dry-insulated, pluggable, for outdoor use</b>	
<b>Applicable standards</b>	<b>IEC 60840</b>	
<b>Working place</b>	<b>indoor and outdoor</b>	
<b>Environment temperature</b>	<b>(°C)</b>	<b>-25°C up to 50°C</b>

<b>Article no.</b>		<b>828 191 002</b>
<b>Nominal voltage</b>	U <sub>n</sub> (kV)	132 - 138
<b>Rated design voltage to ground</b>	U <sub>0</sub> (kV)	76
<b>Lightning impulse withstand voltage BIL</b>	(kV)	-550 / +650
<b>Nominal current</b>	I <sub>N</sub> (A)	2000
<b>Max. thermal short circuit current 3s</b>	I <sub>th</sub> (kA)	50
<b>Max. dynamic short circuit current</b>	(kA)	160
<b>Material outer contour</b>		silicone rubber
<b>Field control method</b>		geometrical
<b>Creepage distance</b>	(mm)	5520
<b>Arcing distance</b>	(mm)	1700
<b>Pollution class E according to IEC 60815-3</b>	(mm/kV)	53.7
<b>Contact bolt</b>	(mm)	ø 50 x 100
<b>Weight</b>	(kg)	150
<b>Routine test: AC withstand voltage 30 min.</b>	(kV)	190
<b>Routine test: Partial discharge test &lt; 5 pC at</b>	(kV)	114

## CONNEX Separable Connectors, Size 6, up to 170 kV

### Application:

- Pluggable separable connector for all XLPE cables
- Available as factory-tested and preassembled field installation cable

### Features:

- The separable connector is installed without any gas- and oilwork at the transformer or GIS
- Considerably reduced installation time and safe installation
- Horizontal, vertical and angled versions for connection to GIS and transformers
- Rapid separation and change of cable and equipment possible
- Touchproof, submersible, and maintenance-free
- Routine-tested from factory



\*<sup>1</sup> depending on conductor cross section and conductor material

### Technical Data

Picture may vary.

<b>Article no.</b>		<b>866 999 999 xxxxx</b>
<b>Max. system voltage</b>	$U_m$ (kV)	170
<b>Size</b>		6
<b>Type designation</b>		dry-type termination
<b>Applicable standards</b>		IEC 60840:2011
<b>Working place</b>		outdoor and indoor offshore on request
<b>Nominal voltage</b>	$U_n$ (kV)	150 - 161
<b>Conductor residual voltage</b>	$U_0$ (kV)	87 - 93
<b>Rated power frequency withstand voltage</b>	1 min (kV)	218
<b>Rated lightning impulse withstand voltage BIL</b>	(kV)	750
<b>Heating cycles</b>	(kV)	175
<b>Partial discharge test &lt; 5pC at</b>	(kV)	131
<b>Rated power frequency withstand voltage - 30 min</b>	(kV)	218
<b>Partial discharge test &lt; 2pC at</b>	(kV)	131
<b>Nominal current<sup>*1</sup></b>	$I_N$ (A)	2500
<b>Rated short-time withstand current</b>	(kA)	50
<b>Rated impulse current CALCULATED</b>	(kA)	160
<b>Conductor material</b>		copper or aluminium
<b>Article no.</b>		<b>866 999 999 xxxxx</b>
<b>Diameter of conductor</b>	$\varnothing$ (mm)	9.3 - 65.0
<b>Conductor cross section</b>	(mm <sup>2</sup> )	2500
<b>Diameter of insulating</b>	(mm)	36 - 113.5
<b>Connection method</b>		Compression connection
<b>Length outside socket</b>	(mm)	600

# CONNEX Separable Connectors, Size 6-S, up to 245 kV

**Application:**

- Pluggable separable connector for all XLPE cables
- Available as factory-tested and preassembled field installation cable

**Features:**

- The separable connector is installed without any gas- and oilwork at the transformer or GIS
- Considerably reduced installation time and safe installation
- Horizontal, vertical and angeled versions for connection to GIS and transformers
- Rapid separation and change of cable and equipment possible
- Touchproof, submersible, and maintenance-free
- Routine-tested from factory



\*1) depending on conductor cross section and conductor material

*Picture may vary.*

## Technical Data

<b>Article no.</b>	<b>866 999 999 zzzzz</b>	
<b>Max. system voltage</b>	<b>U<sub>m</sub> (kV)</b>	<b>245</b>
<b>Size</b>		<b>6-S</b>
<b>Type designation</b>	<b>dry-type termination</b>	
<b>Applicable standards</b>	<b>IEC 62067:2011</b>	
<b>Working place</b>	<b>outdoor and indoor offshore on request</b>	
<b>Nominal voltage</b>	<b>U<sub>n</sub> (kV)</b>	<b>220 - 230</b>
<b>Conductor residual voltage</b>	<b>U<sub>0</sub> (kV)</b>	<b>127 - 133</b>
<b>Rated power frequency withstand voltage</b>	<b>1 min (kV)</b>	<b>460</b>
<b>Rated lightning impulse withstand voltage BIL</b>	<b>(kV)</b>	<b>1050</b>
<b>Heating cycles</b>	<b>(kV)</b>	<b>254</b>
<b>Partial discharge test &lt; 5pc at</b>	<b>(kV)</b>	<b>190</b>
<b>Rated power frequency withstand voltage - 30 min</b>	<b>(kV)</b>	<b>318</b>
<b>Partial discharge test &lt; 2pC at</b>	<b>(kV)</b>	<b>191</b>
<b>Nominal current<sup>*1</sup></b>	<b>I<sub>N</sub> (A)</b>	<b>2500</b>
<b>Rated short-time withstand current</b>	<b>(kA)</b>	<b>50</b>
<b>Rated impulse current CALCULATED</b>	<b>(kA)</b>	<b>160</b>
<b>Conductor material</b>	<b>copper or aluminium</b>	
<b>Article no.</b>	<b>866 999 999 zzzzz</b>	
<b>Diameter of conductor</b>	<b>Ø (mm)</b>	<b>9.3 - 65.0</b>
<b>Conductor cross section</b>	<b>(mm<sup>2</sup>)</b>	<b>2500</b>
<b>Diameter of insulating</b>	<b>(mm)</b>	<b>36 - 113.5</b>
<b>Connection method</b>	<b>Compression connection</b>	
<b>Length outside socket</b>	<b>(mm)</b>	<b>600</b>

## CONNEX Cable Connectors, Size 7, up to 300 kV, according to IEC 62067:2011

### Application:

- Pluggable separable connector for all XLPE cables

### Features:

- The separable connector is installed without any gas- and oilwork at the transformer or GIS
- Considerably reduced installation time and safe installation
- Horizontal, vertical and angeled versions for connection to GIS and transformers
- Rapid separation and change of cable and equipment possible
- Touchproof, submersible, and maintenance-free
- Routine-tested from factory



\*1) depending on conductor cross section and conductor material

### Technical Data

Picture may vary

<b>Article no.</b>		<b>877 999 999 xxxxx</b>
<b>Max. system voltage</b>	<b>U<sub>m</sub> (kV)</b>	<b>300</b>
<b>Size</b>		<b>7</b>
<b>Type designation</b>		<b>dry-type termination</b>
<b>Applicable standards</b>		<b>IEC 62067:2011</b>
<b>Working place</b>		<b>outdoor and indoor offshore on request</b>
<b>Nominal voltage</b>	<b>U<sub>n</sub> (kV)</b>	<b>275 - 287</b>
<b>Conductor residual voltage</b>	<b>U<sub>0</sub> (kV)</b>	<b>160</b>
<b>Rated power frequency withstand voltage</b>	<b>1 min (kV)</b>	<b>320</b>
<b>Rated lightning impulse withstand voltage BIL</b>	<b>(kV)</b>	<b>1050</b>
<b>Heating cycles</b>	<b>(kV)</b>	<b>320</b>
<b>Partial discharge test &lt; 5pc at</b>	<b>(kV)</b>	<b>240</b>
<b>Rated power frequency withstand voltage - 30 min</b>	<b>(kV)</b>	<b>400</b>
<b>Nominal current<sup>*1)</sup></b>	<b>I<sub>N</sub> (A)</b>	<b>4000</b>
<b>Rated short-time withstand current</b>	<b>(kA)</b>	<b>63</b>
<b>Rated impulse current CALCULATED</b>	<b>(kA)</b>	<b>170</b>
<b>Conductor material</b>		<b>copper or aluminium</b>
<b>Diameter of conductor</b>	<b>Ø (mm)</b>	<b>27.3 - 72.5</b>
<b>Article no.</b>		<b>877 999 999 xxxxx</b>
<b>Conductor cross section area</b>	<b>(mm<sup>2</sup>)</b>	<b>630 - 3000</b>
<b>Diameter of insulating</b>	<b>(mm)</b>	<b>76.5 - 131</b>
<b>Connection method</b>		<b>Compression connection</b>
<b>Length outside socket</b>	<b>(mm)</b>	<b>480</b>



# CONNEX Cable Connectors, Size 7-S, up to 362 kV, according to IEC 62067:2011

**Application:**

- Pluggable separable connector for all XLPE cables

**Features:**

- The separable connector is installed without any gas- and oilwork at the transformer or GIS
- Considerably reduced installation time and safe installation
- Horizontal, vertical and angeled versions for connection to GIS and transformers
- Rapid separation and change of cable and equipment possible
- Touchproof, submersible, and maintenance-free
- Routine-tested from factory



Picture may vary.

\*1) depending on conductor cross section and conductor material

## Technical Data

<b>Article no.</b>		<b>877 999 999 zzzzz</b>
<b>Max. system voltage</b>	<b>U<sub>m</sub> (kV)</b>	<b>362</b>
<b>Size</b>		<b>7-S</b>
<b>Type designation</b>		<b>dry-type termination</b>
<b>Applicable standards</b>		<b>IEC 62067:2011</b>
<b>Working place</b>		<b>outdoor and indoor offshore on request</b>
<b>Nominal voltage</b>	<b>U<sub>n</sub> (kV)</b>	<b>330 - 345</b>
<b>Conductor residual voltage</b>	<b>U<sub>0</sub> (kV)</b>	<b>190</b>
<b>Rated power frequency withstand voltage</b>	<b>1 min (kV)</b>	<b>380</b>
<b>Rated lightning impulse withstand voltage BIL</b>	<b>(kV)</b>	<b>1175</b>
<b>Heating cycles</b>	<b>(kV)</b>	<b>380</b>
<b>Partial discharge test &lt; 5pc at</b>	<b>(kV)</b>	<b>285</b>
<b>Rated power frequency withstand voltage - 30 min</b>	<b>(kV)</b>	<b>420</b>
<b>Nominal current<sup>*1</sup></b>	<b>I<sub>N</sub> (A)</b>	<b>4000</b>
<b>Rated short-time withstand current</b>	<b>(kA)</b>	<b>63</b>
<b>Rated impulse current CALCULATED</b>	<b>(kA)</b>	<b>170</b>
<b>Conductor material</b>		<b>copper or aluminium</b>
<b>Diameter of conductor</b>	<b>Ø (mm)</b>	<b>27.3 - 72.5</b>
<b>Article no.</b>		<b>877 999 999 zzzzz</b>
<b>Conductor cross section area</b>	<b>(mm<sup>2</sup>)</b>	<b>630 - 3000</b>
<b>Diameter of insulating</b>	<b>(mm)</b>	<b>76.5 - 131</b>
<b>Connection method</b>		<b>Compression connection</b>
<b>Length outside socket</b>	<b>(mm)</b>	<b>480</b>

## CONNEX Cable Connectors, Size 8, up to 420 kV, according to IEC 62067:2011

### Application:

- Pluggable separable connector for all XLPE cables

### Features:

- The separable connector is installed without any gas- and oilwork at the transformer or GIS
- Considerably reduced installation time and safe installation
- Horizontal, vertical and angeled versions for connection to GIS and transformers
- Rapid separation and change of cable and equipment possible
- Touchproof, submersible, and maintenance-free
- Routine-tested from factory



Picture may vary.

<sup>\*)</sup> depending on conductor cross section and conductor material

### Technical Data

<b>Article no.</b>		<b>889999xxx</b>
<b>Max. system voltage</b>	<b>U<sub>m</sub> (kV)</b>	<b>420</b>
<b>Size</b>		<b>8</b>
<b>Type designation</b>		<b>dry-type termination</b>
<b>Applicable standards</b>		<b>IEC 62067:2011</b>
<b>Working place</b>		<b>outdoor and indoor offshore on request</b>
<b>Nominal voltage</b>	<b>U<sub>n</sub> (kV)</b>	<b>380 - 400</b>
<b>Conductor residual voltage</b>	<b>U<sub>0</sub> (kV)</b>	<b>220</b>
<b>Rated power frequency withstand voltage</b>	<b>1 min (kV)</b>	<b>440</b>
<b>Rated lightning impulse withstand voltage BIL</b>	<b>(kV)</b>	<b>1425</b>
<b>Heating cycles</b>	<b>(kV)</b>	<b>440</b>
<b>Partial discharge test &lt; 5pc at</b>	<b>(kV)</b>	<b>330</b>
<b>Nominal current<sup>*)</sup></b>	<b>I<sub>N</sub> (A)</b>	<b>4000</b>
<b>Rated short-time withstand current</b>	<b>(kA)</b>	<b>63</b>
<b>Rated impulse current CALCULATED</b>	<b>(kA)</b>	<b>170</b>
<b>Conductor material</b>		<b>copper or aluminium</b>
<b>Diameter of conductor</b>	<b>Ø (mm)</b>	<b>72.5</b>
<b>Conductor cross section area</b>	<b>(mm<sup>2</sup>)</b>	<b>630 - 3000</b>
<b>Article no.</b>		<b>889999xxx</b>
<b>Diameter of insulating</b>	<b>(mm)</b>	<b>144</b>
<b>Connection method</b>		<b>Compression connection</b>
<b>Length outside socket</b>	<b>(mm)</b>	<b>1475</b>

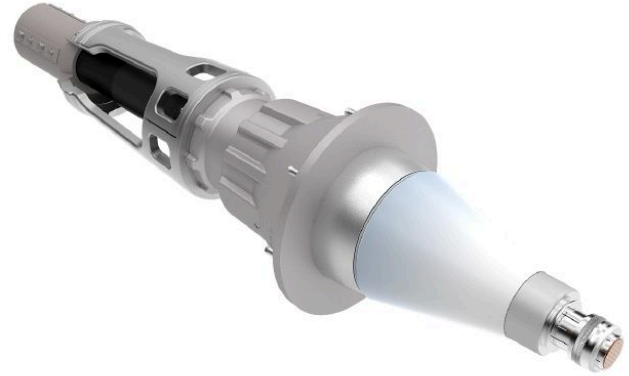
## CONNEX Cable Connectors, Size 9, up to 550 kV, according to IEC 62067:2011

### Application:

- Pluggable separable connector for all XLPE cables

### Features:

- The separable connector is installed without any gas- and oilwork at the transformer or GIS
- Considerably reduced installation time and safe installation
- Horizontal, vertical and angled versions for connection to GIS and transformers
- Rapid separation and change of cable and equipment possible
- Touchproof, submersible, and maintenance-free
- Routine-tested from factory



<sup>1)</sup> depending on conductor cross section and conductor material

*Picture may vary.*

### Technical Data

<b>Article no.</b>	<b>899999xxx</b>	
<b>Max. system voltage</b>	<b>U<sub>m</sub> (kV)</b>	<b>550</b>
<b>Size</b>	<b>9</b>	
<b>Type designation</b>	<b>dry-type termination</b>	
<b>Applicable standards</b>	<b>IEC 62067:2011</b>	
<b>Working place</b>	<b>outdoor and indoor offshore on request</b>	
<b>Nominal voltage</b>	<b>U<sub>n</sub> (kV)</b>	<b>500</b>
<b>Conductor residual voltage</b>	<b>U<sub>0</sub> (kV)</b>	<b>290</b>
<b>Rated power frequency withstand voltage</b>	<b>1 min (kV)</b>	<b>580</b>
<b>Rated lightning impulse withstand voltage BIL</b>	<b>(kV)</b>	<b>1550</b>
<b>Heating cycles</b>	<b>(kV)</b>	<b>580</b>
<b>Partial discharge test &lt; 5pc at</b>	<b>(kV)</b>	<b>435</b>
<b>Nominal current <sup>1)</sup></b>	<b>I<sub>N</sub> (A)</b>	<b>4000</b>
<b>Rated short-time withstand current</b>	<b>(kA)</b>	<b>63</b>
<b>Rated impulse current CALCULATED</b>	<b>(kA)</b>	<b>170</b>
<b>Conductor material</b>	<b>copper or aluminium</b>	
<b>Diameter of conductor</b>	<b>Ø (mm)</b>	<b>72.5</b>
<b>Conductor cross section area</b>	<b>(mm<sup>2</sup>)</b>	<b>630 - 3000</b>

<b>Article no.</b>	<b>889999xxx</b>	
<b>Diameter of insulating</b>	<b>(mm)</b>	<b>144</b>
<b>Connection method</b>	<b>Compression connection</b>	
<b>Length outside socket</b>	<b>(mm)</b>	<b>1475</b>